

CABLE 197 RF: I-PEX MHF + FRONT MOUNT RP SMA S/T BULKHEAD JACK WITH O-RING RATED TO IP67/68 + MULTIPLE CABLE SIZES

SPECIFICATIONS :

1. I-PEX MHF PLUG, P/N:

- FOR ϕ 1.13MM CABLE: 20278-112R-13.
- FOR ϕ 0.81MM CABLE: 20278-112R-08.
- FOR RG178 CABLE: 20278-112R-18.
- FOR ϕ 1.37MM CABLE 20351-112R-37.
- FOR ϕ 1.32MM / ϕ 1.32MM DS CABLE: 20278-112R-32.

2. COAXIAL CABLE, SEE P/N FOR DETAIL.

3. FRONT MOUNT RP SMA STRAIGHT BULKHEAD JACK WITH O-RING RATED TO IP67/68, P/N: RFCT-SMA013-F78.

ENVIRONMENTAL:

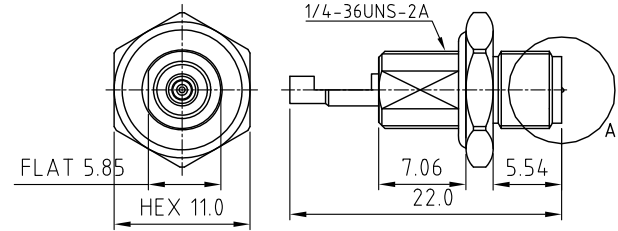
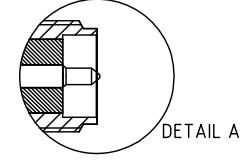
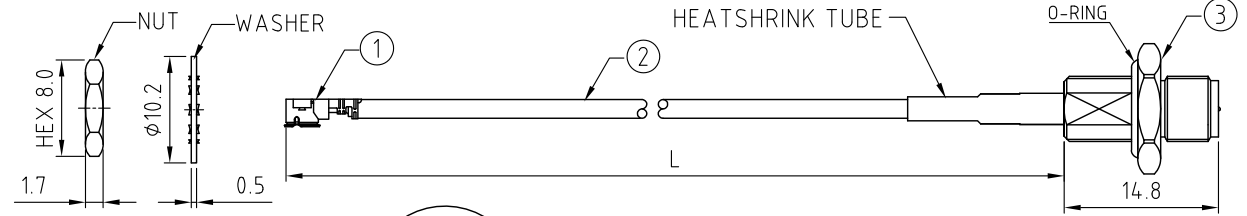
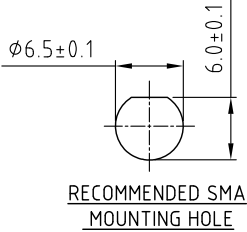
A. BULKHEAD MOUNTED CONNECTOR (RFCT-SMA013-F78) RATED TO THE FOLLOWING SPECIFICATION:

- i. IP6X - DUST TIGHT - NO PARTICLE INGRESS.
- ii. IPX7 WATERPROOF FOR 30 MINUTES UP TO 1 METER UNDERWATER.
- iii. IPX8 WATERPROOF FOR 48 HOURS AT 1 METER UNDERWATER.

NOTES:

- 1. THE ORIENTATION OF CONNECTORS ON DRAWING IS FOR REFERENCE ONLY, IF THE ORDER IS LEFT BLANK THE CONNECTOR WILL NOT HAVE FIXED ORIENTATION.
- 2. FIXED ORIENTATION IS SUGGESTED FOR CABLE LENGTH 25MM TO 100MM. PLEASE SPECIFY THE FIXED ORIENTATIONS FROM THE ORDER CODE (F1, F2, ETC)
- 3. CONTACT GRADCONN IF THE ORIENTATION YOU REQUIRE IS NOT SHOWN.
- 4. WORKING FREQUENCY RANGE: DC-3GHz.
- 5. OPERATING TEMPERATURE: -40°C~+90°C.
- 6. IT IS INTENDED THAT MOUNTING OF THIS CONNECTOR IS ACHIEVED USING THE NUT AND WASHER PROVIDED. PLEASE CONTACT GRADCONN FOR ADVISE IF PLANNING TO USE A DIFFERENT METHOD OF MOUNTING. .
- 7. IMPEDANCE: 50 OHM.

USAGE PRECAUTIONS: CABLES USING 'MICRO' COAX ARE DELICATE:
 (i) HANDLE WITH CARE.
 (ii) DO NOT TWIST; APPLY EXCESSIVE FORCES OR SHARP BENDS TO THE CABLE. DO NOT FORCEFULLY DEFORM WIRES.
 (iii) CONSULT CONNECTOR MANUFACTURER'S DATASHEETS FOR DETAILED NOTES ON HANDLING INSTRUCTIONS.



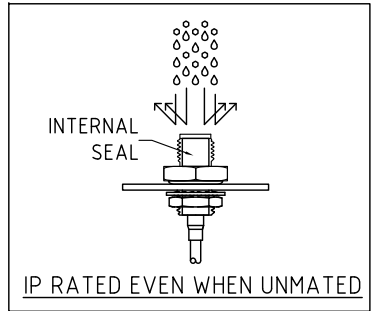
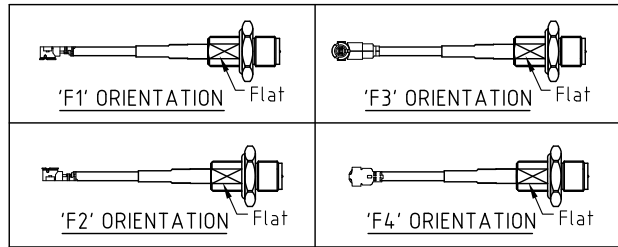
HOW TO ORDER
 CABLE 197 RF - X X X - X X - X - X

"L" LENGTH IN MM:
 eg: 100MM = 100
 (MIN. 025-MAX.400
 STANDARD = 100, 150, 200)
 Tolerance: 20-50mm: ±2mm.
 51-200mm: ±5mm.
 201-400mm: ±7mm.

CABLE SIZE OPTIONS:
 1 = ϕ 1.13MM CABLE, COLOR: GRAY
 2 = ϕ 0.81MM CABLE, COLOR: GRAY
 3 = ϕ 1.13MM LOW LOSS CABLE, COLOR: GRAY
 4 = RG178 CABLE, COLOR: BROWN
 5 = ϕ 1.37MM CABLE, COLOR: BLACK
 6 = ϕ 1.32MM CABLE, COLOR: GRAY
 7 = ϕ 1.32MM DS CABLE, COLOR: GRAY

ORIENTATION OPTIONS:
 BLANK = DOES NOT HAVE A FIXED ORIENTATION
 F1 = MHF CONNECTION DOWN (L=25-100MM)
 F2 = MHF CONNECTION UP (L=25-100MM)
 F3 = MHF CONNECTION AND D FLAT SAME ORIENTATION (L=25-100MM)
 F4 = MHF CONNECTION AND D FLAT OPPOSITE ORIENTATION (L=25-100MM)
 (SEE NOTES 1, 2, 3 AND DIAGRAMS FOR MORE INFORMATION)

WASHER AND NUT OPTIONS:
 BLANK = SEPARATELY PACKED (STANDARD)
 A = ALL ASSEMBLED WITH CONNECTOR



REV. DATE & DRN
10 27/07/15 - NYW RELEASE
11 29/07/15 - NYW
12 03/07/16 - NYW
13 17/07/16 - NYW
14 29/06/16 - NYW
15 01/07/17 - NYW
16 22/02/17 - NYW
17 04/10/18 - NYW
18 27/05/19 - NYW
19 17/08/20 - NYW
20 28/06/21 - NYW
21 15/08/21 - NYW
22 29/04/22 - NYW
23 23/02/22 - CC
24 05/03/24 - CC

10 27/07/15 - NYW RELEASE
11 29/07/15 - NYW
12 03/07/16 - NYW
13 17/07/16 - NYW
14 29/06/16 - NYW
15 01/07/17 - NYW
16 22/02/17 - NYW
17 04/10/18 - NYW
18 27/05/19 - NYW
19 17/08/20 - NYW
20 28/06/21 - NYW
21 15/08/21 - NYW
22 29/04/22 - NYW
23 23/02/22 - CC
24 05/03/24 - CC

Scale: NTS	THIRD ANGLE	Unstated Tolerances:
Drawn: CC		.X N/A
App'd: XXX	Title CABLE ASSEMBLY	.XX N/A
Date: 3 MAR. '24	Revision: 2.4	.XXX N/A
	Unit: mm	ANGLES N/A

IP Rated RF Products

www.gradconn.com

Type: Cable 197 RF
CABLE 197 RF
Drawing Number:
Sheet 1 of 1
Drawing © E and O E